

Community Benefit Report 2023

St. Luke's Health System



Continuing Our Legacy of Excellence in Health Care

From our founding in 1902 to 2022, when we were recognized as one of the top 15 Health Systems in the nation for the 9th consecutive year, St. Luke's has always been a leader in quality care and a dedicated community partner.

As Idaho's only locally based, not-for-profit, community owned and led health system, we are committed to providing all patients with the highest quality health care, regardless of their ability to pay.

merATIVE
15 Top
Health
Systems



Health care is about relationships. Great health care comes from the heart, and I am thankful to be able to say that St. Luke's partnerships, community collaborations, board member engagement, volunteer dedication and team member commitment are driven by that heart-centered spirit. It makes our mission—and excellent patient outcomes and experiences—possible.

— Chris Roth, St. Luke's President and CEO



St. Luke's works to address Idaho's growing mental and behavioral health challenges by participating in statewide efforts, including the Idaho Council on Suicide Prevention, and by investing in mental and behavioral health-focused partners, resources and programs. St. Luke's has made an impact by providing funding for the Idaho Crisis & Suicide Hotline, responding alongside schools during crises and collecting student data to inform evidence-based interventions.



Boys & Girls Clubs provide safe places for youth to convene, develop friendships and engage in evidence-based programs focused on making healthy choices and practicing physical fitness, sportsmanship and good nutrition. This year, St. Luke's has invested in clubs across southern Idaho to provide well-being support to school-age children.

St. Luke's Health System Overview

Report of Community Benefits 2023

St. Luke's primary service area is Ada County, with our secondary service area covering southwest, south-central and west-central Idaho, eastern Oregon and northern Nevada. The numbers below provide a broad overview of the rich benefits St. Luke's provides to local communities in these counties: Ada, Blaine, Canyon, Elmore, Jerome, Twin Falls and Valley. All numbers are current as of the fiscal year ending Sept. 30, 2023.



\$869 Million
Total Community Benefit



\$36 Million
Charity Care



\$105 Million
Services and Programs for the Community



\$18.5 Million
Donations Received

Community Needs Determination Process

St. Luke's community health efforts are directed by community needs assessments, St. Luke's community boards and Community Health and Engagement. In 2023, St. Luke's and partners conducted the first joint Community Health Needs Assessment, which is designed to help us better understand the most significant health challenges facing the individuals and families in our service areas.

Community Health and Engagement, in collaboration with internal and external stakeholders, is responsible for developing, implementing and maintaining optimal community health initiatives designed to address our communities' most significant health needs.



St. Luke's dedication to community benefit guides us to maximize partnerships and available resources, ensuring people have equitable opportunities to achieve their optimal health and well-being.

– Theresa McLeod, St. Luke's Administrator of Community Health and Engagement

St. Luke's Health System Overview



8,797
Donors



56,381
Volunteer Hours



1,247
Volunteers



16,994
Employees



1,313
Physicians*

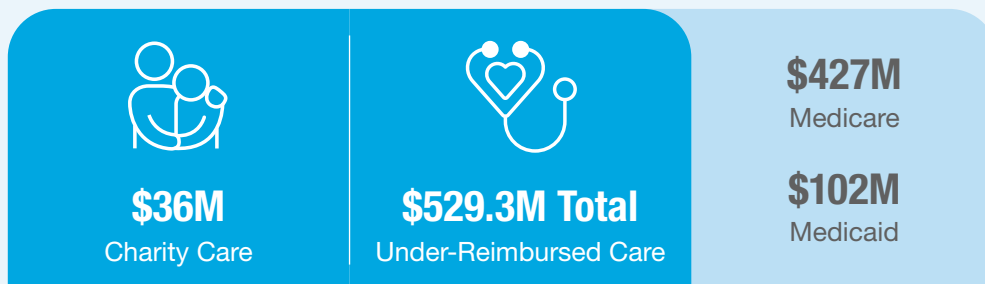


1,217
Advanced Practice
Providers*

Providing a High Quality of Care



**Providers with practice privileges at our locations.
All numbers provided as of fiscal year ending Sept. 30, 2023.*



St. Luke's Elmore Overview

Report of Community Benefits 2023

St. Luke's Elmore is a critical access hospital serving Mountain Home and the large, rural areas of Elmore County. The former Elmore Medical Center was founded in 1955 and integrated with St. Luke's Health System in 2013. The hospital, area clinics and local providers are a vital part of this close-knit community, which includes Mountain Home Air Force Base.



\$7.3 Million

Total Community Benefit



\$176,000

Donations Received



640

Volunteer Hours



44

Volunteers



286

Employees



169

Physicians*



101

Advanced Practice Providers*

Providing a High Quality of Care

\$912,591

Education of Health Professionals

\$85,195

Subsidized Health Services

\$8,644

Community Health Improvement Services

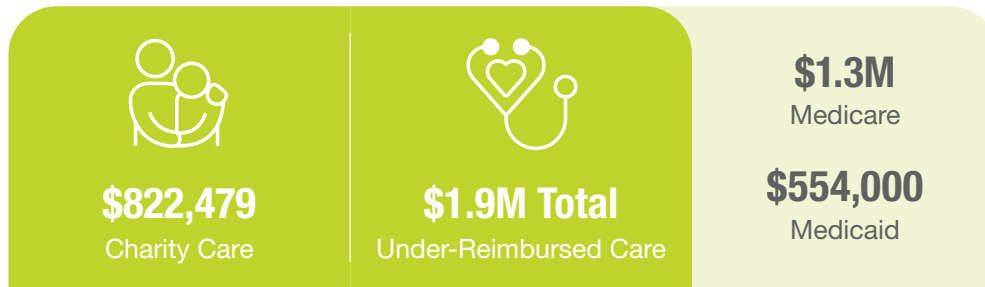
\$64,551

Cash and In-Kind Donations

Community Services

*Providers with practice privileges at our locations. All numbers provided as of fiscal year ending Sept. 30, 2023.

St. Luke's Elmore Overview



St. Luke's provides health care to eligible patients without charge or at a reduced rate, based upon a sliding scale derived from federal poverty guidelines.



I'm proud of our students and their vision for change. Our partnership with St. Luke's for the #YouAreMore and Community Canvas projects, and the Yellow Buddy Benches, let youth know they're not alone in their struggles.

– Karen Brescia, RN, Mountain Home High School Health Occupations Teacher



St. Luke's Magic Valley Overview

Report of Community Benefits 2023

What began as Twin Falls County Hospital in 1918 has evolved into a state-of-the-art medical center and a vital member of the communities it serves, providing a full range of inpatient and outpatient services to the people of Twin Falls, southern Idaho and northern Nevada.



\$155.5 Million
Total Community Benefit



\$1.3 Million
Donations Received



5,782
Volunteer Hours



79
Volunteers



3,001
Employees

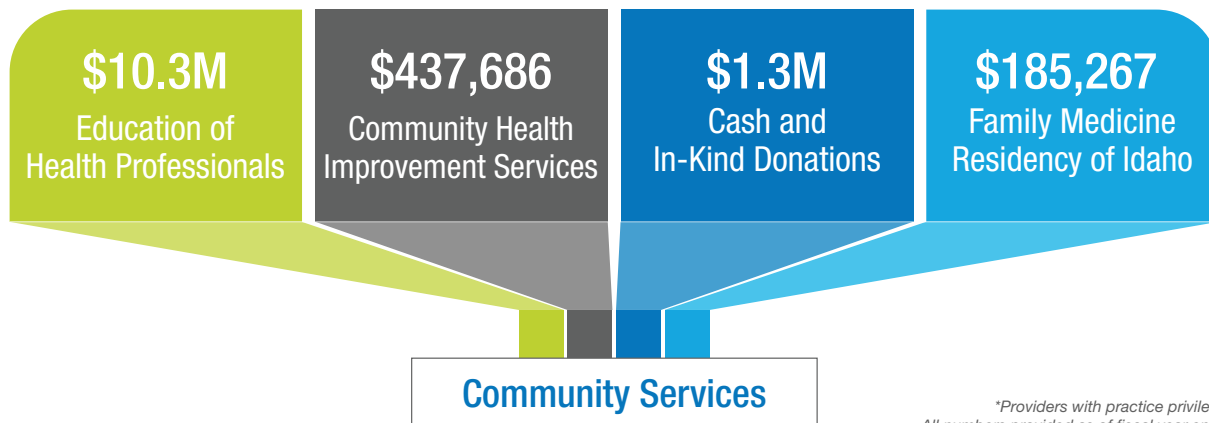


337
Physicians*



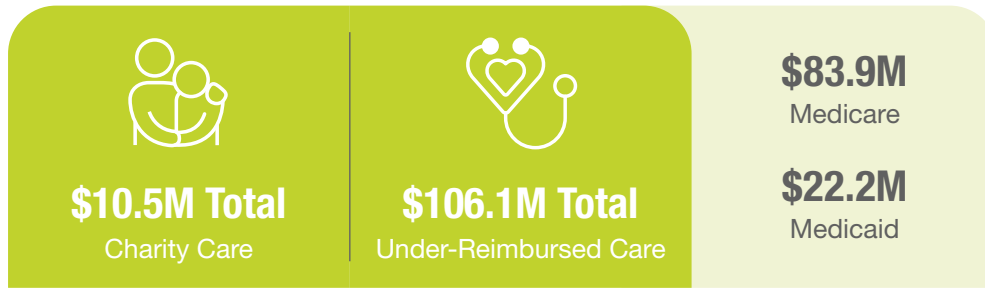
182
Advanced Practice
Providers*

Providing a High Quality of Care

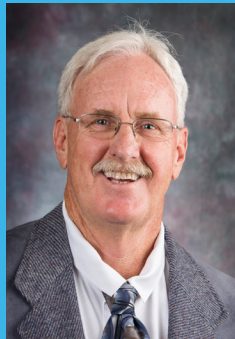


*Providers with practice privileges at our locations. All numbers provided as of fiscal year ending Sept. 30, 2023.

St. Luke's Magic Valley Overview



St. Luke's provides health care to eligible patients without charge or at a reduced rate, based upon a sliding scale derived from federal poverty guidelines.



St. Luke's relationships with community partners addressing concerns such as housing, transportation and food is supporting both the community's mental and physical health.

– Scott Standley, St. Luke's Magic Valley and Jerome Community Board Chair



Improving Access to Patient-Centered Care

\$7.2 Million Total

Total Capital Improvements—One hundred percent of St. Luke's revenue after expenses is reinvested into land, facilities, equipment and other capital supporting the hospital's mission for Twin Falls County.

\$5.2 Million

Facility Upgrades—Equipment and upgrade costs to improve its St. Luke's Magic Valley Hospital, Jerome Hospital and clinics in Twin Falls and surrounding areas. These improvements to existing facilities will allow St. Luke's to continue to meet the medical and behavioral health needs of the growing community.

\$2 Million

Technology—We continually upgrade key information technology infrastructure to boost efficiencies, lower costs and most importantly, improve safety and quality for patients.

St. Luke's McCall Overview

Report of Community Benefits 2023

St. Luke's McCall is a critical access hospital and a leader in health and wellness promotion. Founded in 1956 as McCall Memorial Hospital, the medical center and clinics integrated with St. Luke's Health System in 2010. In 2023, we opened an expanded, modernized hospital and a new Urgent Care clinic in the community.



\$24.9 Million
Total Community Benefit



\$910,000
Donations Received



3,493
Volunteer Hours



53
Volunteers



313
Employees

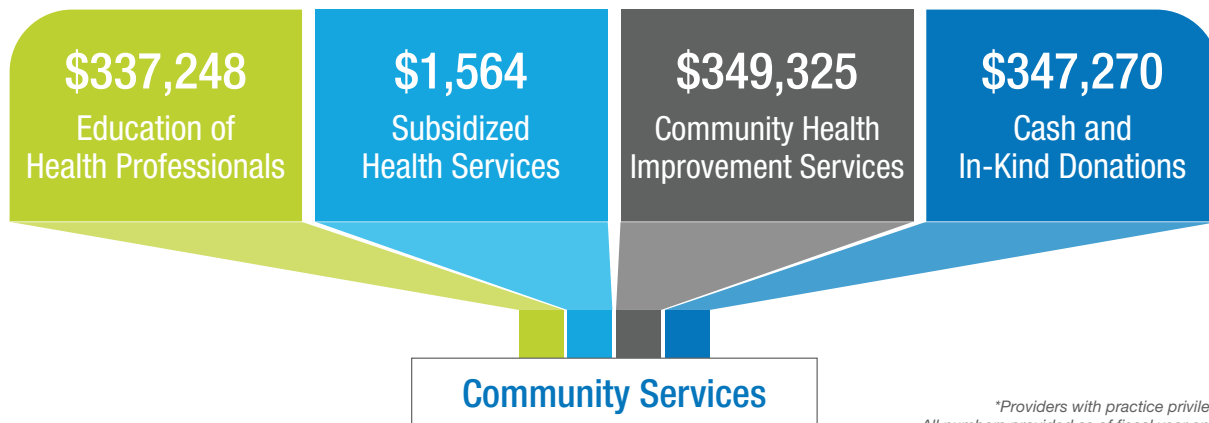


94
Physicians*



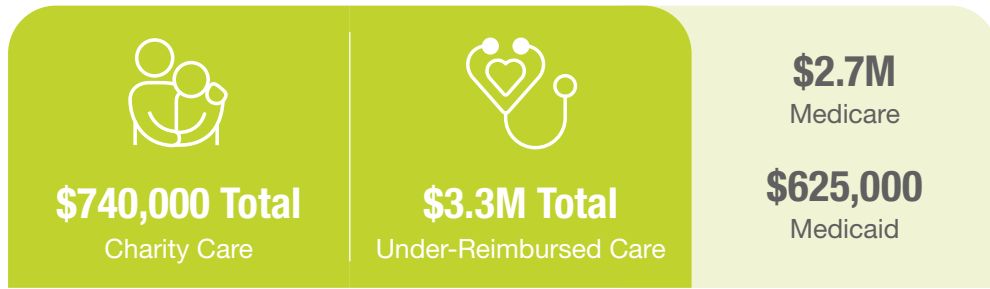
51
Advanced Practice Providers*

Providing a High Quality of Care



*Providers with practice privileges at our locations. All numbers provided as of fiscal year ending Sept. 30, 2023.

St. Luke's McCall Overview



St. Luke's provides health care to eligible patients without charge or at a reduced rate, based upon a sliding scale derived from federal poverty guidelines.



The community has been asking for better access to primary care. We are excited we were able to open the new urgent care clinic last summer, making it easier and more affordable for individuals and families to get the care they need.

– Amber Green, RN, BSN, MSN, St. Luke's McCall Chief Operating Officer/CNO



St. Luke's Treasure Valley Overview

Report of Community Benefits 2023

St. Luke's serves the growing cities of Boise, Meridian, Eagle and beyond. St. Luke's Boise is Idaho's largest health care provider, the flagship hospital of St. Luke's Health System and home to the state's only Children's Hospital. St. Luke's Meridian is a full-service medical center with the busiest Emergency Department in Idaho. Our Boise and Meridian hospitals and Treasure Valley clinics are Magnet-designated for nursing excellence.



\$604.7 Million
Total Community Benefit



\$12.8 Million
Donations Received



42,169
Volunteer Hours



1,024
Volunteers



11,453
Employees



1,024
Physicians*



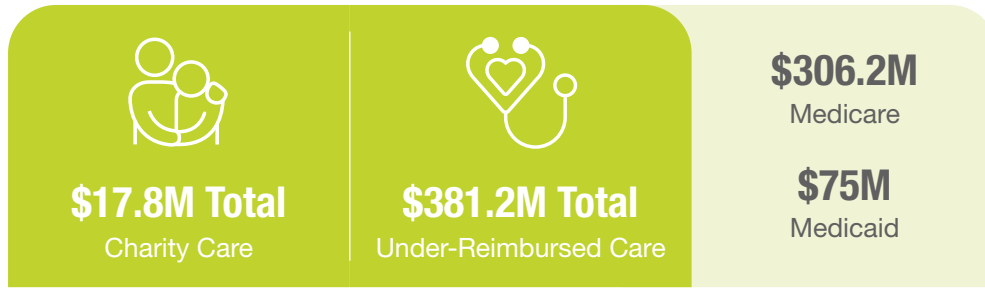
586
Advanced Practice
Providers*

Providing a High Quality of Care



*Providers with practice privileges at our locations. All numbers provided as of fiscal year ending Sept. 30, 2023.

St. Luke's Treasure Valley Overview



St. Luke's provides health care to eligible patients without charge or at a reduced rate, based upon a sliding scale derived from federal poverty guidelines.



Serving on the community board provides an exceptional opportunity to collaborate with compassionate leaders invested in supporting the mission of St. Luke's to improve community health and well-being in Idaho.

— Joelle Powers, St. Luke's Treasure Valley Community Board Chair, Professor and Senior Associate Dean, Boise State University College of Health Sciences



Improving Access to Patient-Centered Care

\$103.9 Million Total

Total Capital Improvements—

One hundred percent of St. Luke's revenue after expenses is reinvested in the organization to serve the communities in southwestern Idaho and eastern Oregon in the form of staff, buildings or new technology.

\$22.2 Million

Downtown Boise Campus Development—We invested in architecture, planning and project costs related to our multiyear project to add 80 additional hospital beds and 7 operating rooms, priming our downtown location to meet the needs of Idaho's fast-growing population.

\$61.3 Million

Center for Orthopedics & Sports Medicine—We continued development and construction of this 230,000 square foot campus, which will house specialty clinics, orthopedic walk-in care, an indoor/outdoor rehabilitation gym, 12 operating rooms and more. The center opened in February 2024.

\$7.6 Million

Technology—We continually upgrade key information technology infrastructure to boost efficiencies, lower costs and most importantly, improve safety and quality for patients.

\$12.7 Million

Other Projects—We are dedicated to updating equipment and expanding our clinics and facilities in the Treasure Valley to give patients the best quality of care.

St. Luke's West Treasure Valley Overview

Report of Community Benefits 2023

Our commitment to Canyon County continues to grow with St. Luke's Nampa Medical Center, clinics throughout the county and St. Luke's Fruitland Medical Plaza in the Fruitland-Ontario area. We're a dedicated partner with area nonprofits working together to improve the health of people in this rapidly growing and diverse region, from the more populated cities to smaller, more remote rural communities.



\$66.7 Million
Total Community Benefit



\$518,000
Donations Received



4,105
Volunteer Hours



38
Volunteers



1,231
Employees



509
Physicians*



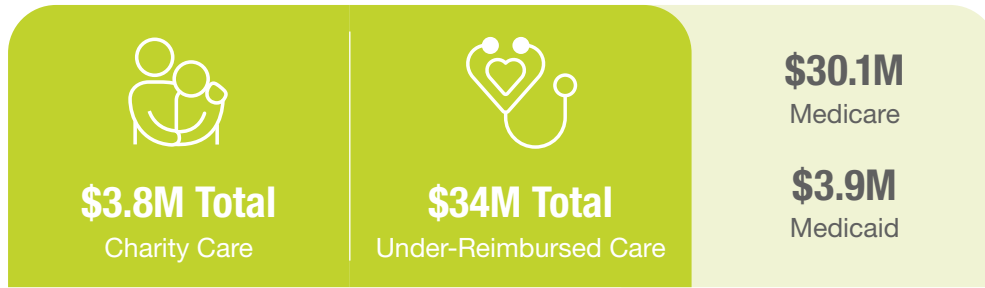
250
Advanced Practice Providers*

Providing a High Quality of Care



*Providers with practice privileges at our locations.
All numbers provided as of fiscal year ending Sept. 30, 2023.

St. Luke's West Treasure Valley Overview



St. Luke's provides health care to eligible patients without charge or at a reduced rate, based upon a sliding scale derived from federal poverty guidelines.



Informed by local community board members, St. Luke's makes investments that are strategically placed to boost services and resources that address the issues most impacting the health of our communities.

– Nikki Zogg, St. Luke's West Treasure Valley Community Board Member and Director of Southwest District Health



Improving Access to Patient-Centered Care

\$13.4 Million Total

Total Capital Improvements—One hundred percent of St. Luke's revenue after expenses is reinvested into land, facilities, equipment and other capital supporting the hospital's mission for Canyon County.

\$11.4 Million

South Nampa Community Clinic—The first of its kind, this clinic offers primary care services including pediatrics, family and internal medicine, as well as urgent care and same-day visits, an in-house pharmacy, lab and x-rays.

\$1.3 Million

Facilities Development—We are dedicated to updating equipment and expanding our clinics and facilities in West Treasure Valley to give patients the best quality of care.

\$682,149

Technology—We continually upgrade key information technology infrastructure to boost efficiencies, lower costs and most importantly, improve safety and quality for patients.

St Luke's Wood River Overview

Report of Community Benefits 2023

St. Luke's Wood River Medical Center is a critical access hospital serving Blaine County and the surrounding region. It provides a broad range of advanced services for its size, including an Emergency Department staffed by board-certified emergency physicians, state-of-the-art surgical facilities and outpatient infusion services, including chemotherapy. A wide variety of primary and specialty care providers coordinate patient care in local clinics, along with a network of 170 physicians.



\$9.8 Million
Total Community Benefit



\$3.4 Million
Donations Received



193
Volunteer Hours



9
Volunteers



444
Employees

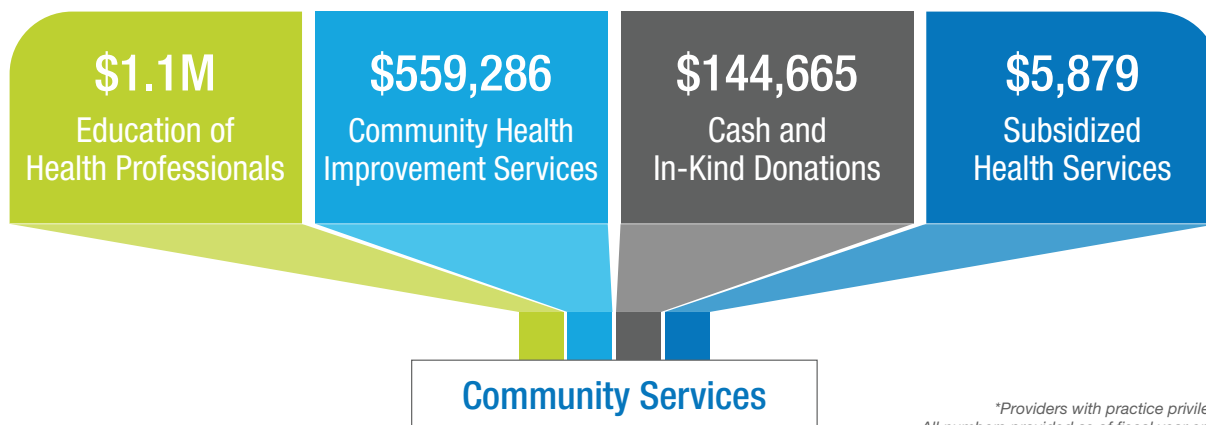


170
Physicians*



47
Advanced Practice Providers*

Providing a High Quality of Care



*Providers with practice privileges at our locations. All numbers provided as of fiscal year ending Sept. 30, 2023.

St Luke's Wood River Overview



St. Luke's provides health care to eligible patients without charge or at a reduced rate, based upon a sliding scale derived from federal poverty guidelines.



St. Luke's Wood River is committed to supporting the well-being of our community members and visitors, extending care beyond the hospital walls.

– Almita Nunnelee, St. Luke's Wood River Chief Operating Officer/Chief Nursing Officer



Giving Thanks

Our work assessing and addressing community needs would not be possible without a visionary board of directors and our dedicated community boards. We are grateful for their partnership and guidance.

St. Luke's Health System Board of Directors as of Sept. 30, 2023:

Andrew Scoggin, Chairperson
Emily Baker
Brigette Bilyeu
Tom Corrick
Rosa Dávila, PhD
Lucie DiMaggio, MD
Mark Durcan
Bill Gilbert
Lisa Grow
Allan Korn, MD
Dan Krahn
Bob Lokken
Rich Raimondi
Chris Roth, President/CEO
Jill Twedt
Bill Whitacre

St. Luke's Elmore Community Board as of Sept. 30, 2023:

James Gilbert, Chairperson
Connie Cruser, RN
Karen Galvan, MD
Richard Gorman
Lloyd Knight
Mildred McNeal
Lisa Melchiorre, MS, RN, NEA-BC
Allen "Nix" Nicksich
Dayana Rodriguez
Paul Shrum

St. Luke's Magic Valley/Jerome Community Board Members as of Sept. 30, 2023:

Scott Standley, Chairperson
Arlen Blaylock
Melody Bowyer
Eva Craner
Dean Fisher
Don Hall
Roseanna Holliday
Janet Olmstead
Julia Oxarango-Ingram
Edna Pierson
Travis Rothweiler
John Shine
Dave Snelson
Kevin Watson
John Wright

St. Luke's McCall Community Board Members as of Sept. 30, 2023:

Robert Vosskuhler, MD, Chairperson
Kristin Christensen
Sarah Covault
Eddie J. Droge, MD
Amber Green
Doug Irvine, MD
Patrick Kinney, MD
Dean Martens
Dawn Matus
Lyle Nelson
Travis Smith
Gary Thompson
Aana Vannoy
Kurt Wolf

St. Luke's Treasure Valley Community Board Members as of Sept. 30, 2023:

Joelle Powers, PhD, Chair-Elect
Christina Bruce-Bennion
Derek Bub
Scott Curtis
Cathy Hall
Marle Hoff
Stephanie Myers
Alejandro Necochea, MD
Kate Nelson
Lisa Roberts
Robert Sanchez, PhD
Nicole Thurston, MD
Jack Varin
Jill Wagers, DMD
Noreen Womack, MD

St. Luke's West Treasure Valley Community Board Members as of Sept. 30, 2023:

Nikole Zogg, PhD, Chairperson
Chris Veloz
Ron Bitner
Evelyn Dame
Bill Deal
Jose DeLeon
Janet Komoto
Paul Lodge
Misty Robertson
Andrew Rodriguez
Timothy Sawyer, MD
Kim Stutzman, MD
Rick Youngblood

St. Luke's Wood River Community Board Members as of Sept. 30, 2023:

Eric Thomas, Chairperson
Bill Boeger
Erin Clark
Jim Foudy
Ben Holmes
George Kirk
Jeanne Liston
Julie Lyons, MD
Cynthia Murphy
Almita Nunnelee
Susan Parslow
Garry Pearson
Keith Perry
Bob Robideaux
Roger Sanger, DDS
Jeff Smith
Mary Williams

The information provided in this report is required by Idaho Code 63-602D, which states that 501(c)(3) hospitals having 150 or more beds must file a community benefit report with the Board of Equalization by Dec. 31 of each year. According to the code, the report is to include a description of the process the hospital has used to determine general community needs that align with the hospital's mission. In addition, the report shall include the hospital's amount of:

- Unreimbursed services for the prior year (charity care, bad debt, and under-reimbursed care covered through government programs).
- Donated time, funds, subsidies and in-kind services.
- Additions to capital such as physical plant and equipment.